



Fundamentals *by* FORMICA GROUP

POSTFORMING LAMINATE RANGE

# Product availability

Reference	Name	Surface Finish	Grade	Polycoated as standard	Sheet Size (mm)			
					2440x1220	3050x1220	3050x1300	3660x1525
0352	Burled Amberwood	Gloss	HGP	Yes	-	-	•	-
0363	Steel Swirl	Shell	HGP	No	-	-	•	-
0392	Powder Blue	Shell	HGP	No	-	-	•	-
1813	Buttermilk	Shell	HGP	No	-	-	•	-
1831	Muslin	Shell	HGP	No	-	-	•	-
2301	RN Grey	Shell	HGP	No	-	-	•	•
3019	Sea Jade	Shell	HGP	No	-	-	•	-
3401	Pewter Grey	Shell	HGP	Yes	-	-	•	-
4385	Charcoal Splatter	Shell	HGP	No	-	-	•	-
4548	Ailsa	Shell	HGP	No	-	-	•	-
6463	Sheer White	Shell	HGP	No	-	-	•	-
6464	Signal White	Shell	HGP	No	-	-	•	•
6465	Cotton	Shell	HGP	No	-	-	•	-
6466	Silk Grey	Shell	HGP	No	-	-	•	•
6467	Granite Grey	Shell	HGP	Yes	-	-	•	-
6468	Jet Black	Shell	HGP	Yes	-	-	•	•
6468	Jet Black	Gloss	HGP	Yes	-	-	•	•
6469	Sea Blue	Shell	HGP	Yes	-	-	•	-
6470	Pine Green	Shell	HGP	Yes	-	-	•	-
6471	Sunny Yellow	Shell	HGP	No	-	-	•	-
6472	Rosso	Shell	HGP	No	-	-	•	•
6683	Mountain Maple	Shell	HGP	No	-	-	•	-
6684	Classic Beech	Shell	HGP	No	-	-	•	•
6685	Batu Wenge	Shell	HGP	No	-	-	•	-
6686	Sakura Cherry	Shell	HGP	No	-	-	•	-
6687	Wild Apple	Shell	HGP	No	-	-	•	-
6688	Summer Oak	Shell	HGP	No	-	-	•	-
6689	Classic Redwood	Shell	HGP	No	-	-	•	-
6690	Biella Walnut	Shell	HGP	No	-	-	•	-
6691	Grey Dots	Shell	HGP	No	-	-	•	•
6692	Grey Canvas	Shell	HGP	No	-	-	•	•
6693	Beige Canvas	Shell	HGP	No	-	-	•	•
6694	Blue Canvas	Shell	HGP	No	-	-	•	•
6890	Durham Oak	Shell	HGP	No	-	-	•	•
7617	Sen Ash	Shell	HGP	No	-	-	•	-
8100	White	Shell	HGP	No	-	-	•	•
8100	White	Gloss	HGP	Yes	-	-	•	•
8172	Havana	Shell	HGP	Yes	-	-	•	-
8178	Platinum	Shell	HGP	No	-	-	•	-
8180	Quicksilver	Shell	HGP	No	-	-	•	-
8183	Royal Blue	Shell	HGP	Yes	-	-	•	-
M4892 CIM	Circles	Circles	MTS	Yes	-	•	-	-
M4892 FPM	Treadplate	Treadplate	MTS	Yes	-	•	-	-
M4892 MTM	Matte Aluminium	Matte	MTS	Yes	•	•	-	-
M4892 NCM	Horizontal Corrugated	Corrugated	MTS	Yes	-	•	-	-
M4892 SQM	Squares	Squares	MTS	Yes	-	•	-	-
M4892 VCM	Vertical Corrugated	Corrugated	MTS	Yes	-	•	-	-
M4896 BRM	Brushed Aluminium	Brushed	MTS	Yes	•	•	-	-

HGP = Horizontal Grade Postforming      MTS = Metallic Standard Grade Thin HPL (non postforming).

All Formica® laminates are manufactured in accordance with ISO 9001:2000 and EN 438:2005



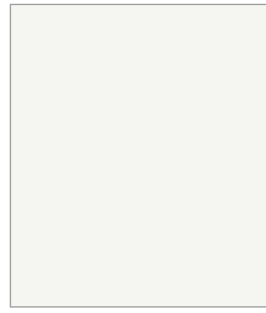
Formica Limited reserves the right to change specification at any time without prior notice. The information contained in this brochure was correct at the time of publication but our policy is one of continuous product expansion and improvement and we expect to make changes in the future.

The designs reproduced in this publication have been matched as close as the printing process will allow. It is recommended that you obtain actual samples prior to specification or use.

**Samples Tel: 0191 259 3512, [samples.uk@formica.com](mailto:samples.uk@formica.com)**



Fundamentals by FORMICA GROUP



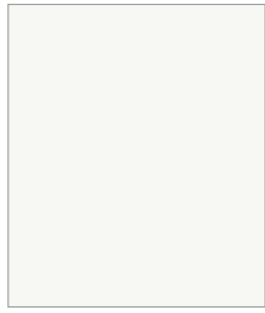
6464  
Signal White



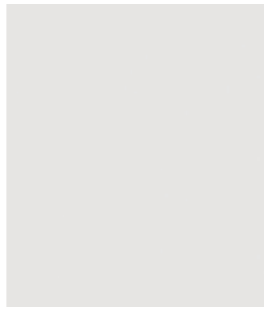
8100  
White Gloss



8100  
White



6463  
Sheer White



2301  
RN Grey



6693  
Beige Canvas



6691  
Grey Dots



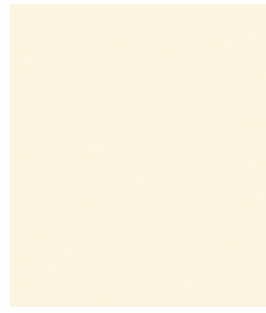
4548  
Ailsa



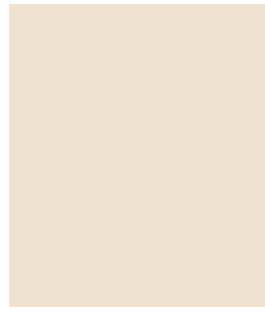
6692  
Grey Canvas



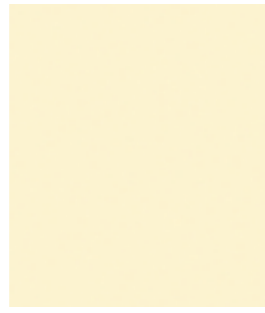
6694  
Blue Canvas



1813  
Buttermilk



6465  
Cotton



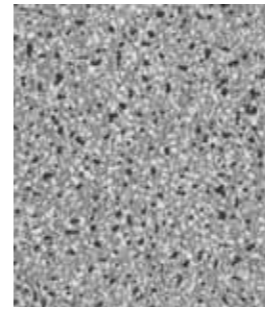
1831  
Muslin



6471  
Sunny Yellow



6472  
Rosso



4385  
Charcoal Splatter



0363  
Steel Swirl



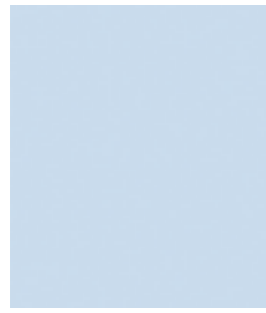
6683  
Mountain Maple



7617  
Sen Ash



6688  
Summer Oak



0392  
Powder Blue



8183  
Royal Blue



6469  
Sea Blue



3019  
Sea Jade



6470  
Pine Green



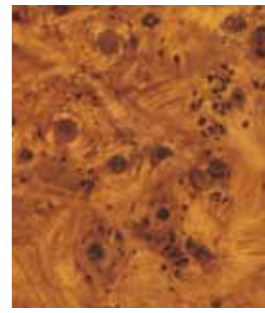
6687  
Wild Apple



6684  
Classic Beech



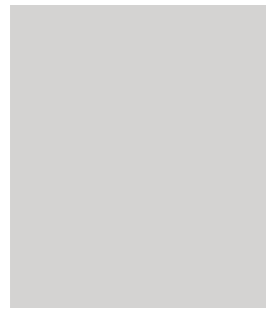
6890  
Durham Oak



0352  
Burled Amberwood



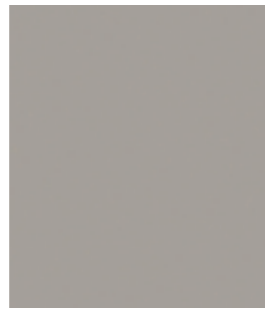
6686  
Sakura Cherry



6466  
Silk Grey



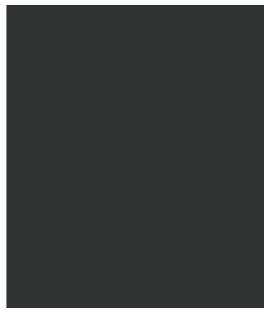
8180  
Quicksilver



8178  
Platinum



3401  
Pewter Grey



6467  
Granite Grey



8172  
Havana



6690  
Biella Walnut



6685  
Batu Wenge



6689  
Classic Redwood

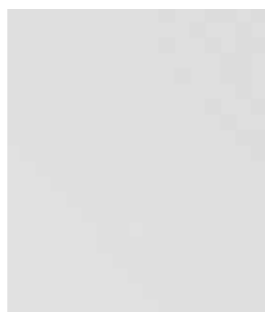


6468  
Jet Black Gloss



6468  
Jet Black

Metals



M4892 MTM  
Matte Aluminium



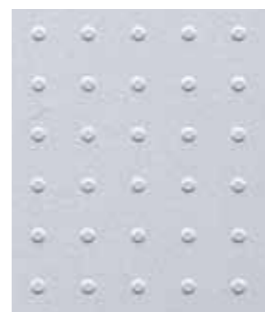
M4896 BRM  
Brushed Aluminium



M4892 VCM  
Vertical Corrugated



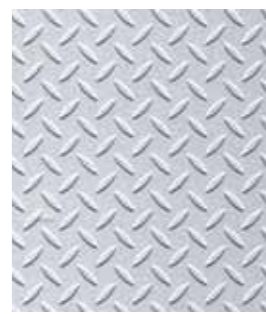
M4892 NCM  
Horizontal Corrugated



M4892 CIM  
Circles



M4892 SQM  
Squares



M4892 FPM  
Treadplate

Printed Pattern and Woodgrain samples are shown at approximately 1:1 scale except for Burled Amberwood which is 1:2 scale.  
Printed Metal samples are shown at approximately 1:2 scale.