

# FOUR KONNECT

Connection is the  
key to success.



# LET'S GET ACQUAINTED

TIME TO KONNECT



Whoever said tables should be square and boring? The FourKonnnect folding table is definitely not; it has a vivid design that allows endless creative configurations and feeds creativity. Designed to optimise the meeting experience. Optional wheels make it simple to move, fold and store; thus, FourKonnnect is suitable for all environments from the boardroom to the classroom.

# KEY FEATURES

## AGILE WORKING MADE EASY

The world of work, and the way people interact with their colleagues and the work they do, is constantly evolving. But is your workspace able to keep up with the changes?

Choosing FourKonnnect allows you to easily create spaces that suit whatever your working needs, without compromising on style or comfort.



The dual-locking castor ensures that the table is as stable as fixed-frame furniture. The locked castor prevents the need for linking devices. Rubberised castors allow easy movement on any floor surface.

50mm height adjustment ensures that each table-top meets flush on even the most uneven floors.

FourKonnnect has a strong steel under-frame with a leg at each corner.

Narrow transit profile allows FourKonnnect to easily fit through doors (390mm max).



## KEY FEATURES



FourKonnnect's shape facilitates multiple configurations. Every user has a defined 750mm workspace with a straight edge and a clear line of sight around the table.

580mm of uninterrupted legroom means no one sits astride a table leg, writes over a seam or is squashed into a corner.

Modesty panels and cable management can be fitted without compromising the folding or nesting function.

\*See pricelist for details



Flip, lock, sit, start working.

FourKonnnect can be quickly and easily assembled by one person! No heavy lifting and no need for a trolley. The tables are easily folded, moved, and nested allowing you to make the most of your working space.

# FOURKONNECT

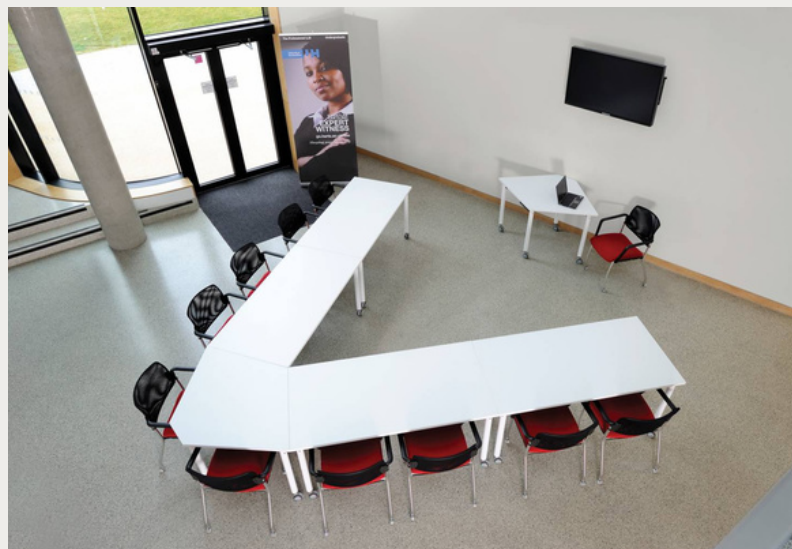
## MEET ANYWHERE

Meeting - Facilitating meetings of all shapes and sizes, the FourKonnnect shape ensures personal space, clear lines of sight and the flexibility to quickly change the layout to suit your needs.



## BE PRESENT

Presentation and Training - FourKonnnect tables create the perfect configuration for any presentation style. Each delegate has a good line of sight so that everyone can be fully engaged. Facilitators can easily transform the room from presentation style to small breakout areas.



# FOURKONNECT

## CREATE YOUR OWN SPACE

Personal working - FourKonnnect maximises the use of even the smallest space- the possibilities are almost endless.



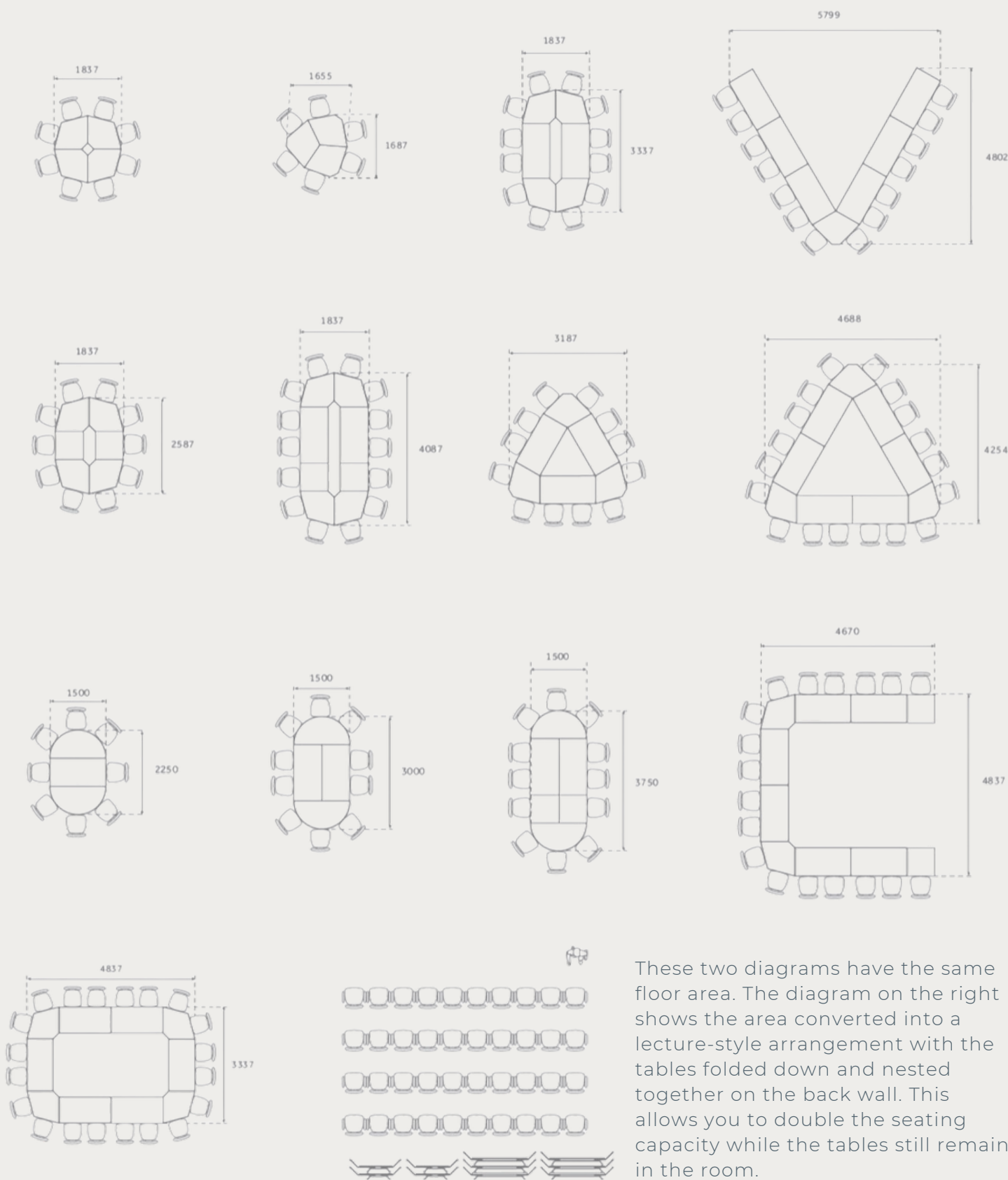
## GET SOCIAL

Socialising - From small groups to large social gatherings, FourKonnnect tables make your refreshment and breakout areas a flexible facility.



# SUGGESTED LAYOUTS

Selection of seating arrangements using only FourKonnnect tables. In Konnect shape, rectangle, square and semi-circle. All dimensions in mm.



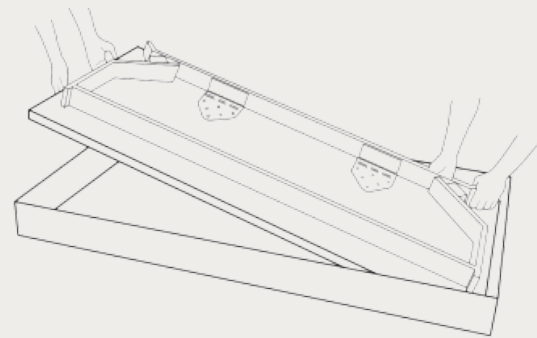
These two diagrams have the same floor area. The diagram on the right shows the area converted into a lecture-style arrangement with the tables folded down and nested together on the back wall. This allows you to double the seating capacity while the tables still remain in the room.

# ASSEMBLY INSTRUCTIONS

To ensure proper assembly of your **FourKonnnect** folding table, please take the time to read through the steps in this assembly guide and follow them carefully. We have already attached the table frame to the table top for you.

## 01 Remove the table from the box

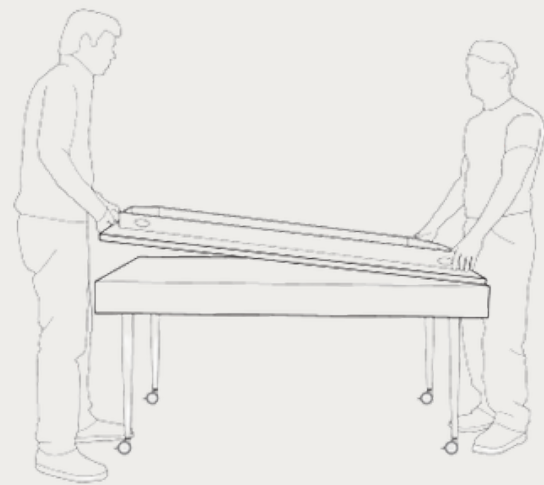
For ease of assembly, and to avoid injury, ensure the table is lifted by two people



## 02 Place the table face down

On a soft, clean surface to eliminate the possibility of scratching.

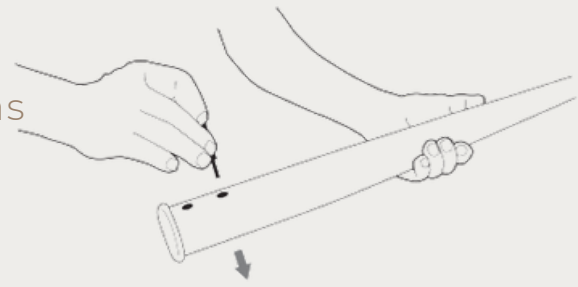
Tip: Once the first table has been assembled, it can act as a bench to assemble further tables. We recommend using the rectangle shape as your bench with the box lid placed on top to avoid scratching.





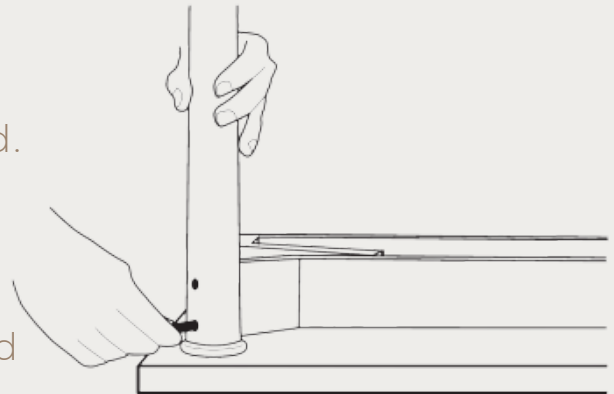
### 03 Remove a leg from the box

Insert the leg bolts through the two legs as shown, until the thread is showing on the other side.



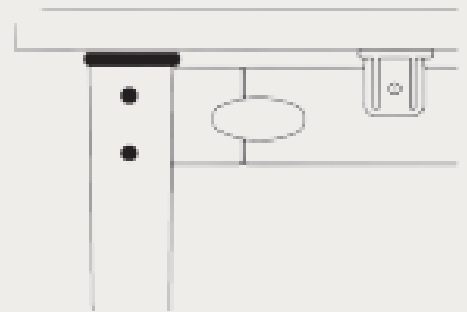
### 04 Securing the legs

Screw the leg bolts to the frame by hand. Tighten with the allen key provided. Repeat steps 3 and 4 until all legs are securely fastened to the frame.  
Note: Extra care should be taken to avoid double crossing the bolt thread.



### 05 Check the frame

To ensure the locking mechanism is in the locked position.



### 06 It's that simple...

Two people should then flip over your finished FourKonnnect table and place on the floor.



# CLEANING AND MAINTENANCE



## MELAMINE FACED CHIPBOARD (MFC) WORK SURFACES

Clean with a paper towel or a soft clean cloth or sponge. If using a damp cloth, dry the surface with an absorbent paper towel or soft cloth. Normal domestic cleaners or soaps may be used but should be wiped off to prevent streaks, the surface being dried with a soft clean cloth or paper towel. The following should never be used: scouring and abrasive agents, polish, washing powder, furniture dealer, bleach, detergents with strong acids, or steam cleaning equipment.

## PAINTED METALWORK

Wipe with a damp soft lint free cloth, soaked in warm water and a mild non-abrasive soap.  
Wipe down with a clean damp cloth and dry.

The leg bolts should be checked periodically to ensure that they are fixed securely.

# DIMENSIONS



Konnect

750 x 750 x 750 x 740 (mm)



Rectangle

1500 x 750 x 740 (mm)



Square

750 x 750 x 740 (mm)



Semi-circle

1500 x 750 x 740 (mm)

# FINISHES

## STRAIGHT LEG FINISH OPTIONS



B

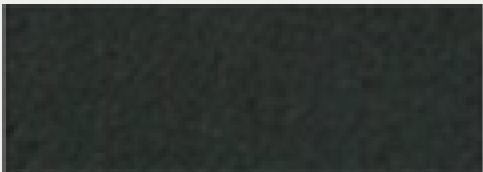
Black RAL 9005



C

Chrome

## STANDARD UNDERFRAME COLOURS



B

Graphite Grey 813

# FAQ'S

## Tell me about the castor technology.

When unlocked the FourKonnnect Dual-Locking castor enables smooth transportation of the table on all floor surfaces. Unlike a traditional castor its unique engineering prevents the castor rotating and swivelling when locked, thus creating the rigid stability associated with fixed frame furniture.

## Can I level FourKonnnect tables if my floor is uneven?

Yes. Two levelling spindles are found above the FourKonnnect Dual-Locking castor. To instantly level your table, simply turn the spindle by hand. Every leg has 50mm of adjustment, ensuring perfect table-top alignment (no tools are required).

## What top finishes are available on FourKonnnect tables?

Customers can choose from a variety of finishes and beautiful veneered tops with optional inlay. We also produce special table tops using environmentally friendly materials such as Bamboo and Forbo linoleum (price on application). For finish samples please email [sales@oceedesign.com](mailto:sales@oceedesign.com).

## Can you produce special sizes?

Subject to quantity we can produce a wide variety of rectangular folding tables. The maximum length available is 1850mm and the maximum depth 800mm.

## Do the tables link together?

No. The dual-locking castor eliminates the need for any linking device. When all castors are locked the tables are as strong and sturdy as a fixed table. Simply unlock the castors and you are ready to go – further reducing reconfiguration time and effort. Should linking be required for electrical safety reasons, we can provide the appropriate device.

## Can I have electrics in my FourKonnnect tables?

Yes. We offer a number of power units which can be configured with voice, power, data and VGA connections.

## Do all FourKonnnect tables fold?

Yes, to a profile of 390mm. A matching modesty panel and cable management can be fitted without compromising the folding function.

# FAQ'S

## Do FourKonnnect tables nest?

Yes. All FourKonnnect table shapes fold and nest in the same way. Five tables nested will occupy 1015mm.

## Are the castors suitable for hard floors?

Yes. FourKonnnect tables are fitted with dual-locking castors, more durable than a traditional castor and with a unique structure that is suitable for all floors.

## What is the warranty on FourKonnnect tables?

FourKonnnect tables are guaranteed for 10 years under normal wear and tear conditions. OCee Design seating is guaranteed for 5 years when used for up to 8 hours per day and subject to normal wear and tear conditions.

## Do you offer a range of fabrics/finishes for your seating?

Yes. A full range of fabrics are available from all mainstream fabric manufacturers. A range of finishes are available and are specified for each product range.

## Where can I find an Ocee Design dealer?

Simply telephone us on 01604 674674 or send an email to [sales@oceedesign.com](mailto:sales@oceedesign.com) with details of your address and post code and we will advise you of your nearest dealer.

# QUESTIONS ABOUT FOURKONNECT?

[www.oceedesign.com](http://www.oceedesign.com)  
[sales@oceedesign.com](mailto:sales@oceedesign.com)  
+44 (0) 1604 674674

**ocee**  
DESIGN



AN OCEE  
INTERNATIONAL  
COMPANY